



AWWCA

12th Annual General Meeting

Reflections ...

A Community Photo Album

**Ainslie Wood/Westdale
Community Association of
Resident Homeowners Inc.**

~

***Building Community
Block by Block***

Neighbourhood News & Views

**The AWWCA's
Award-Winning Newsletter**

The AWWCA's Board of Directors 2009-10



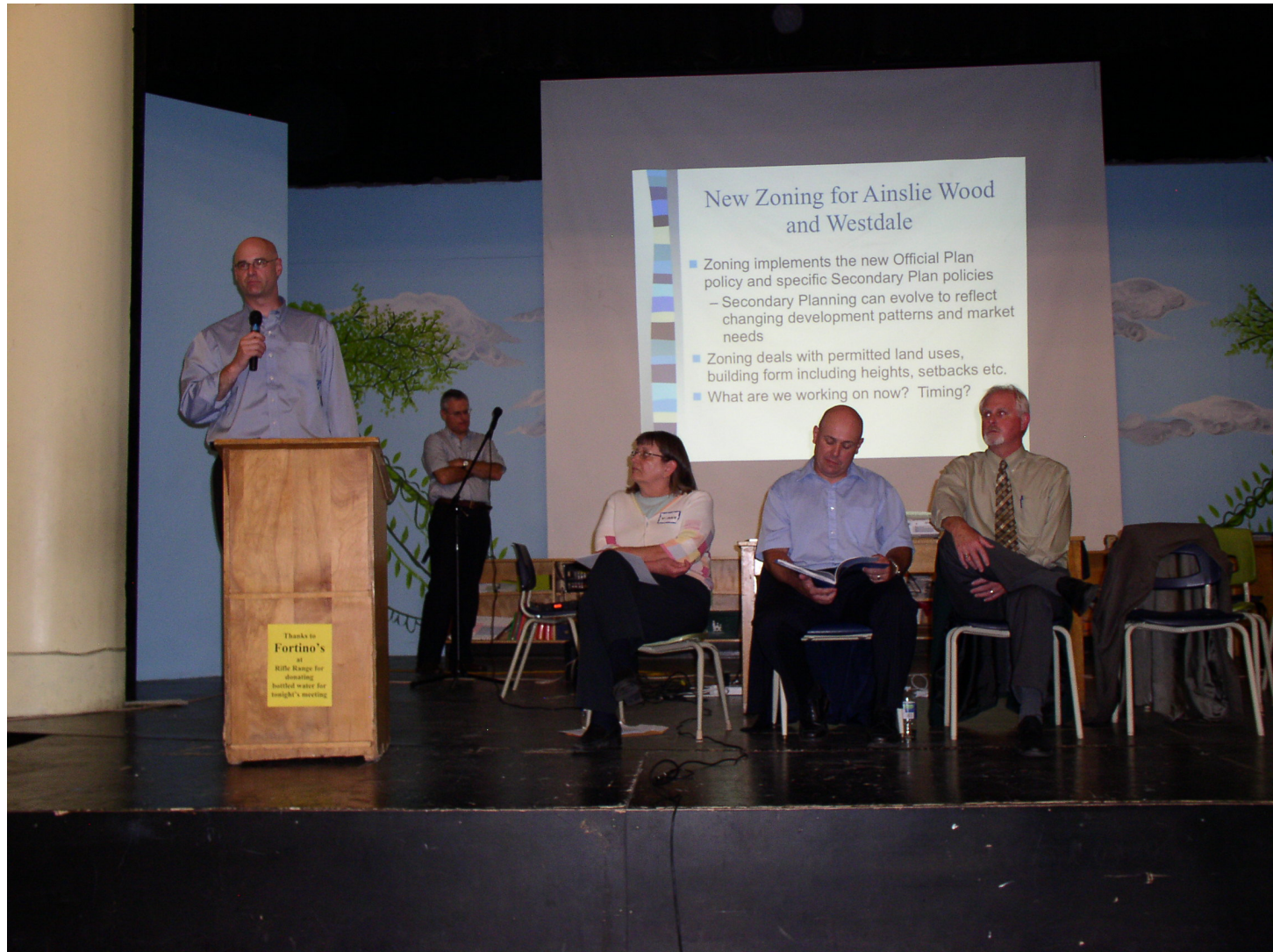
AWWCA President John Wigle at 2009 Annual General Meeting



2009 AWWCA AGM



Al Fletcher Addresses 2009 AGM



2009 AWWCA Food Drive at AGM

Thanks Angela!



AWWCA Website Launched Sept. 2006

www.AWWCA.ca



Ainslie Wood/Westdale Community Association of Resident Homeowners Inc. (AWWCA)

Site Resources

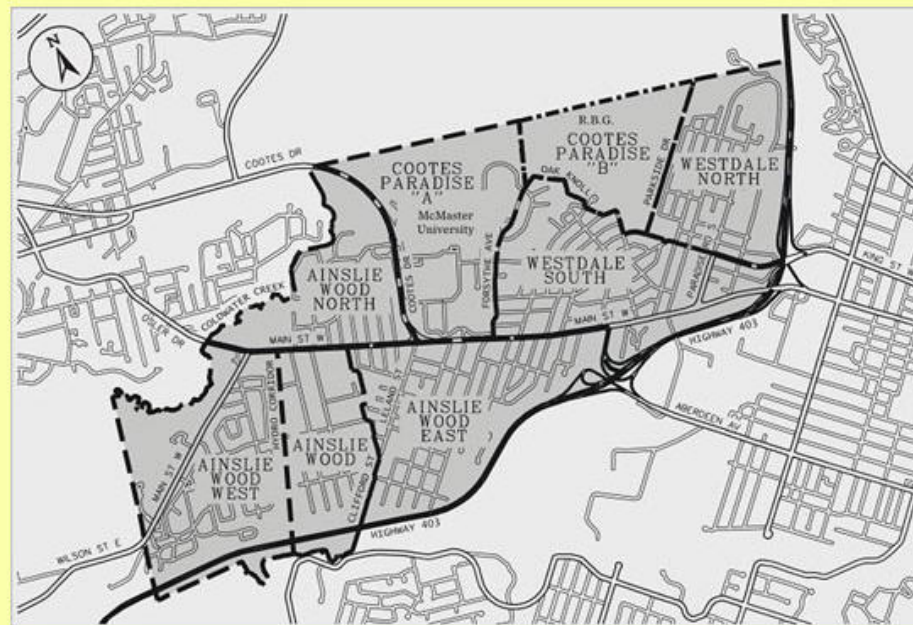
[About the AWWCA](#)
[Mission Statement](#)
[AWWCA Initiatives](#)
[AWWCA Newsletters](#)
[Useful Phone Numbers](#)
[Board Members](#)
[FAQ](#)

Living in Ainslie Wood / Westdale

[Why live in Ainslie
Wood/Westdale](#)
[News/Essays/Articles](#)
[Photogallery](#)

Become a

AWWCA Neighbourhoods



The Association is a volunteer, non-profit association sustained by the energy of volunteers and by fees and donations from members and friends of the AWWCA.



Recent News/Articles

[Graffiti Day Sept. 20-06 \(2006-08-11\)](#)

[Welcome Bags for
New Students - Sept.
13 \(2006-08-11\)](#)

[Identify Theft \(2006-07-10\)](#)

Recent Downloadable Essays

[Westdale's Own Ring](#)

AWWCA Volunteers Distribute Welcome Bags to Students



Ainslie Wood North Revitalization Initiated 2009



Ainslie Wood North Revitalization: Garage Sale on Sanders Sept. 2009



Retired Past-President Rob Payne



AWWCA President John Wigle



We Said Farewell to Sergeants Savoie and Potter



**A Big Welcome
to
Chief DeCaire
and
Sergeant
Feser**



**Thank
You,
HPS**



No Noise Sign at Sterling & Forsyth



Our Ward 1 Councillor, Brian McHattie



Westdale's Student Trustee and AWWCA Member Haakim Nainar



Ainslie Wood North Earth Day Cleanup 2010



Churchill Park 9th Annual Earth Day Cleanup 2010



Ainslie Wood East Earth Day Cleanup 2010



MacNeill Station

Earth Day Cleanup 2010



Quaker Meeting House Station Earth Day Cleanup 2010



Can the Butts

Launched by AWWCA 2010



Adopt-Your-Block

Launched by AWWCA 2009



So far . . . 42 Blocks Adopted by Volunteers Aged Two to 88



A Committee of the AWWCA Launched 2007



**Ainslie Wood Westdale
Walkability Committee**

Adopt-A-Box Launched 2005



West Village Student Condos Earns Highest Rating for Green Buildings



Main Street Entrance



McMaster University President

**Dr. Patrick
Deane**



Photo: J. D. Howell

McMaster Hospital



Photo Courtesy of Mark DeBruyn-Smith

On Campus Near Sterling Street Entrance



Gardens at McMaster's Sterling Street Entrance



McMaster's University Hall



Photo Courtesy of Mark DeBruyn-Smith

McMaster's Leed Platinum Engineering Building Opened 2009





Laura Stevens, Director of McMaster's Community Support Network



McMaster Students Union

MSU



MSU President Mary Koziol Dressed for Welcome Week



Student Housing Evaluation



McMaster Students Recognized by Community March 2010



AWWCA's Student Liaison Welcomes New Students



PJ Parade 2010



PJ Parade 2010



PJ Parade September 8 2010



PJ Parade 2010



PJ Parade 2010



PJ Parade 2010



PJ Parade 2010



PJ Parade 2010



PJ Parade 2010



Campus Town Association, a Partnership: AWWCA, BIA, McMaster



The AWWCA is a Member of the Town & Gown Association of Ontario



The AWWCA Is Highlighted as a Best-Practice Community Association by TownGown World



**The AWWCA is a
Member of F.U.N.**



Churchill Park



Churchill Park Splash Pad Completed September 2006



“Hammerheads” Working Out in Churchill Park



Adventure Running Kids' Program in Westdale



Timbits at Churchill Park



Movie in Churchill Park



The Old Oak, In Memoriam



One of Six Benches Made From Old Oak Installed in Churchill Park 2008



**Thanks to Westdale Secondary School
Students and the City**



**THE OLD OAK
OF CHURCHILL
INSTALLED BY WESTDALE S.S.
& THE CITY OF HAMILTON
2008**

Farewell to “The Brain”



Photo by Aaron Moxley

Kids Playing in Churchill Park 2010



Ice Skating at Churchill Park



Snow Forts on Cline N. 2010



“On our way” ... to Hockey at Churchill Fields



Photo by Aaron Moxley

Tobogganning at Cootes



Photos by Aaron Moxley



RBG Fishway at Cootes Paradise



RBG Fishway at Cootes Paradise



RBG Trail off Marion N. in Spring



AWWCA Volunteers Help Build a Boardwalk at Caleb's Walk September 2009



RBG Trail in Autumn



Photo Courtesy of Mark DeBruyn-Smith

Community Gardens at Aviary



Salvaging the Herb and Plant Lover's Garden 2010



1,200 Volunteers Plant 2,200 Trees in Churchill Park on Earth Day 2010



Photo: Cornelius Heesters

Kids Planting Trees at Churchill Park on Earth Day 2010



Photo: Cornelius Heesters

Children Playing in Churchill Park on Earth Day 2010



Photo: Cornelius Heesters

MSU Pumpkin Party & George R. Allan Night Hike



Carved Pumpkin Dog at Night Hike



Stroud Road Park



Stroud Road Park



Oakwood Parkette



Alexander Park Playground



A Street in Westdale in Springtime



A Street in Westdale in Winter



Photo: AARON MOXLEY

Cherry Trees in Springtime Churchill Park at the Aviary



What a Beautiful Day to Play Ball in Churchill Park



Barclay Street Laneway



Cline Avenue North Laneway



North Oval Laneway



Sterling Street Laneway



North Oval Laneway



After the Storm on May 6, 2010 North Oval



Photo: Cornelius Heesters

Paisley Parkette in Westdale Village



Westdale Village



Photo Courtesy of Mark DeBruyn-Smith

Boulevards in Westdale Village 2009



Boulevards in Westdale Village 2010



Outside Second Cup in Westdale Village



Second Cup in Westdale Village



WESTDALE VILLAGE
BIA

**LOCAL
FARMERS
MARKET**



Westdale BIA Market



Preschool Co-op at Westdale United



Temple Playhouse on Cline North



Playgroup at St. Paul's Anglican



MSU Daycare at King West and Haddon North



**Westdale
Children's
School
at
Cline North
and
Bond North**



George R. Allan School on Cline North at King West



Stream of Dreams at George R. Allan School



Prince Philip Public School on Rifle Range Road



Kehila Jewish Community Day School at Temple Anshe Sholom, Cline North



Canadian Martyrs School on Main West at Leland St.



St. Mary Catholic Secondary School on Whitney Avenue



Westdale Secondary School on Main West at Longwood



École Secondaire Georges-P.-Vanier on Macklin Street North



Glenwood School on Lower Horning Road



Columbia International College Main West at Paisley



Irving Zucker College of Jewish Studies on Bowman Street



Dalewood Middle School on Main West at Dalewood



Atrium of McMaster Innovation Centre on Longwood Road South



Longwood Road Bikeway Opened September 2010



Sanders Bikeway Opened Autumn 2009



Sterling Bikeway Opened Summer 2004



Greenspace Preserved on Main West in 2004



Garden on Boulevard on Sterling Street at Dromore Crescent



King Street West and Paradise Road Sept. 2009



King Street West and Paradise Road September 2010



King Street West and Paradise Road September 2010



Boulevard on Main West at Haddon 2009



Boulevard on Main West at Haddon 2010



Rail Trail Sign at Ewen Road



Rail Trail East of Broadway With Historic CPR Signal



Heritage Designation Requested for Rail Trail



Rail Trail East of Emerson Street



TH&B Bridge at Highway 2, Looking East



Planting St. George's Memory Garden July 18-09



Planting St. George's Memory Garden July 18-09



BBQ Sept. 12-09

Churches Open Doors



St. George's Memory Garden

September 2010



St. George's Memory Garden

September 2010



Cenotaph at St. George's



Memorial at Dalewood Middle School



Memorial at Dalewood Middle School

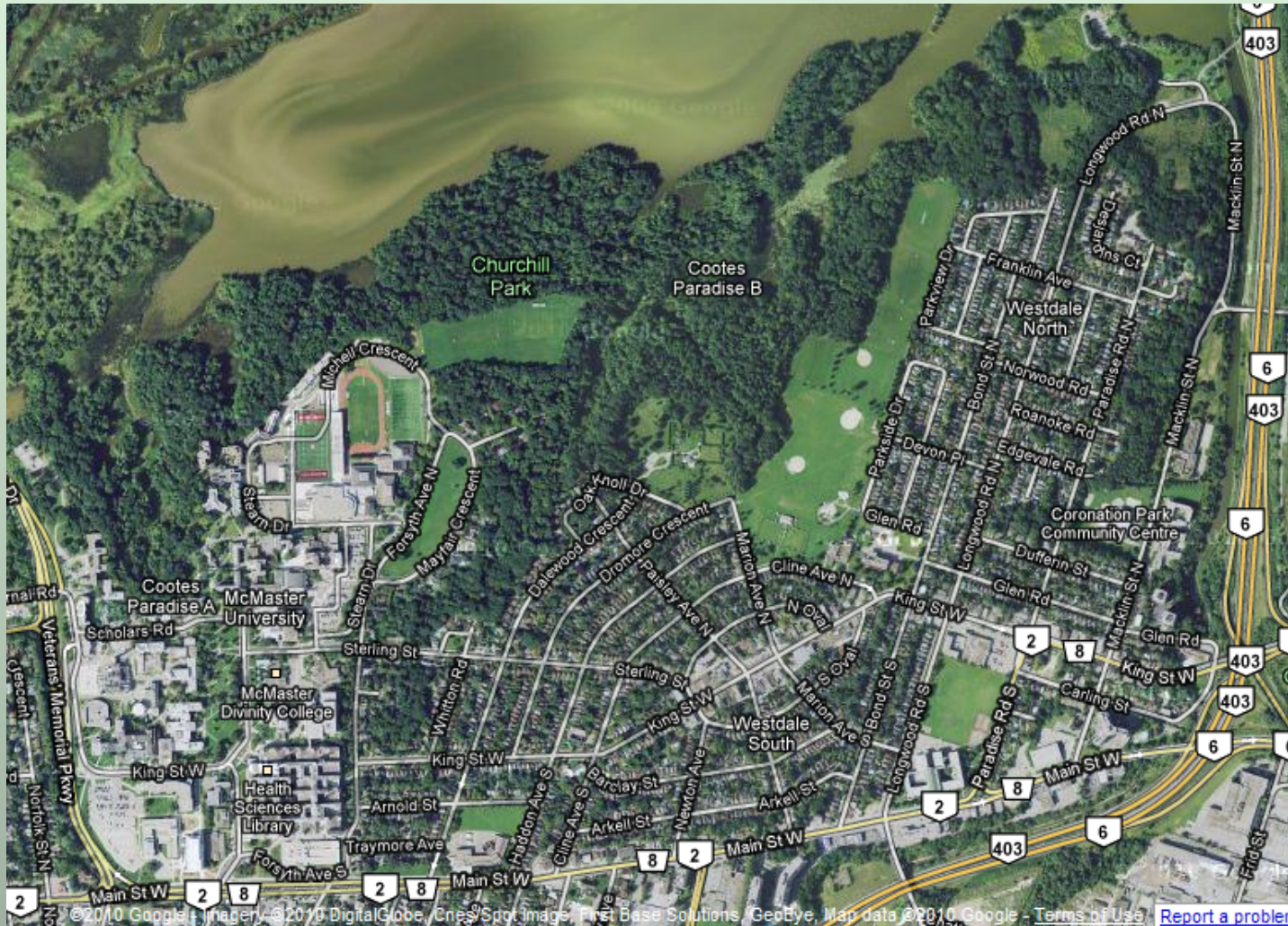


The Way We Were

Buttrum Farm near Oak Knoll Dr.



Westdale: Canada's First Planned Community



The Way We Were TH&B in West Hamilton



Princess Point



Photo by Mark DeBruyn-Smith